

## Front Grill Mesh Insert fitting instructions

### FITS :

Maserati 3200 GT 1998-2002

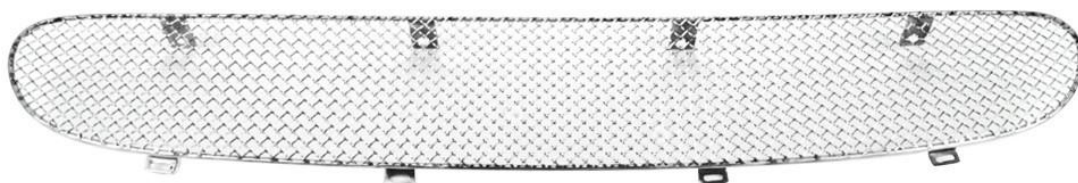
Maserati 4200 GT 2002-2004

Maserati GranSport 2002-2004

Maserati 4200 GT Spyder 2001-2004



**Product No: 21.06.04.21 (Chrome)**



**Product No: 21.06.04.22 (Black)**





### **What is in the box**

1 x Mesh Grill Insert

### **Tools needed**

1 x Phillips screwdriver (short)

1 x Flathead screwdriver

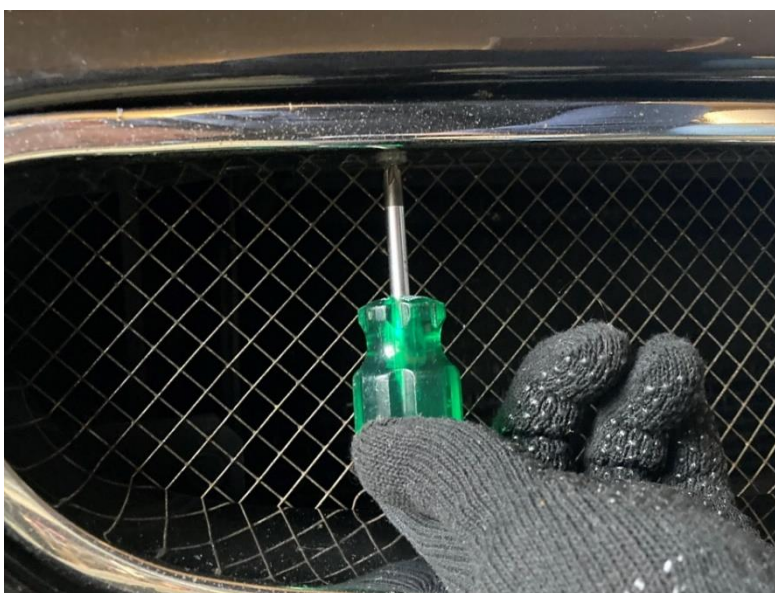
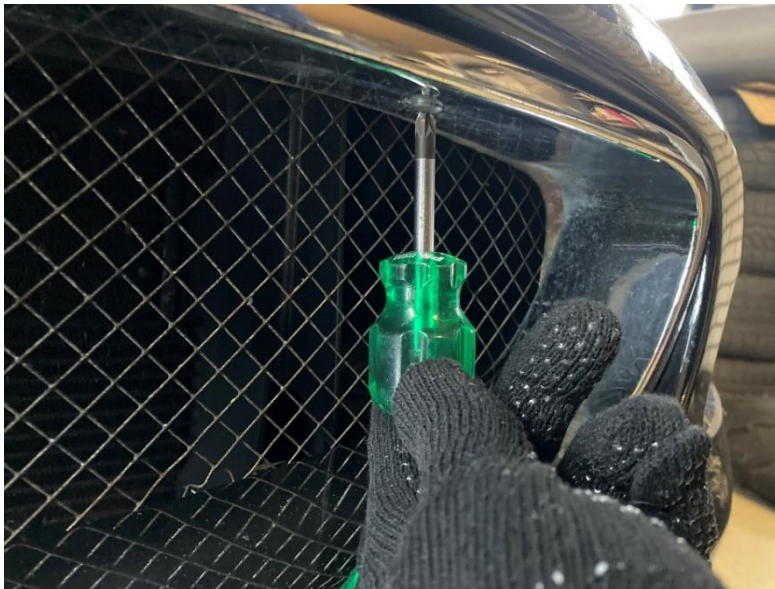
1 x 7 mm wrench

### **Average installation time**

60 minutes

### **STEP 1**

Remove the 4 screws that hold the top of the front grill. For this you need a short phillips screwdriver.





## STEP 2

Use the flathead screwdriver to loosen the 4 clips that hold the front grill on the bottom. Pull the grill forward and press the clips open with the screw driver while pulling the studs out. It's best you start with the clips from the outside, working towards the Maserati Trident.



### STEP 3

Pull the grill gently forward by holding on to the mesh with your fingers. You can also use a plastic prying tool. Now you can take the grill out.



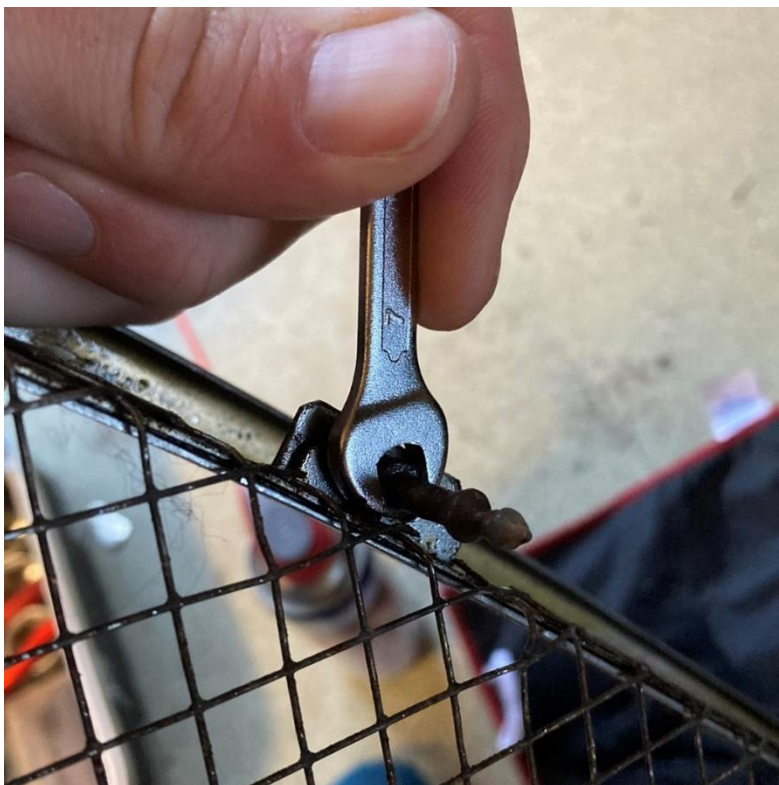




#### STEP 4

Spray WD40 (or similar lubricant) on the 4 studs and the screw that hold the mesh grill on to the grill surrounding. Let this soak for a few hours. Remove the 4 studs using a 7 mm wrench and remove the screw using a phillips screwdriver.









## STEP 5

Place the new mesh grill insert on the grill frame and line up the holes.







#### **STEP 6**

Attach the mesh grill to the frame using the 4 studs.







## STEP 7

Push the grill back into the bumper. Left corner first then the right corner.





## STEP 8

Enjoy your new stainless steel grill!

