

Manual Luggage Rack LIMITED EDITION 2016

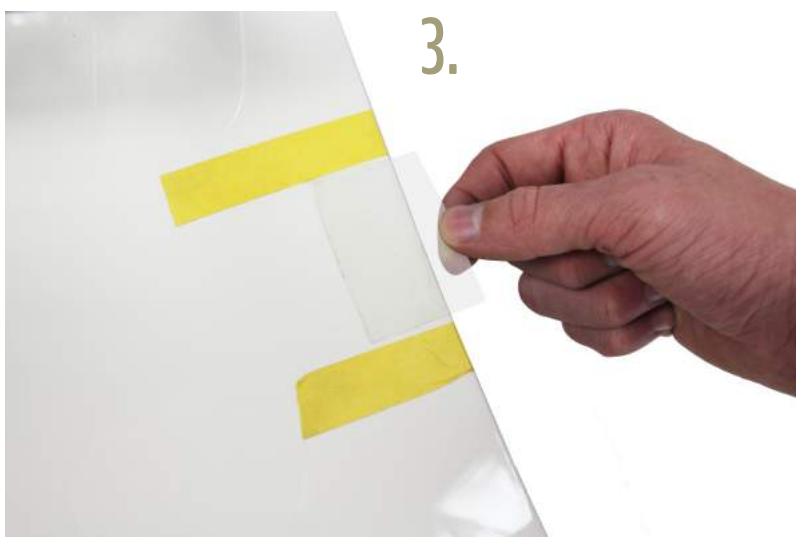


1. First place the luggage rack on the boot-lid and place it in the middle.

2. When you think the luggage rack is in the right position. Use some tape to locate the position off the carrier on the boot-lid. Take the luggage rack of the trunk and stick some protective 3-M strips on the locations you have measured.



3.



4. Take the plastic plug out.



5. Place the luggage rack on the boot-lid and tighten the side brackets.



6. Use the supplied two screws on every bracket for extra fastening don't tighten these screws with too much force because they can go through the protective 3-M strips



7. Look out! When you close the trunk first watch if the side brackets don't touch the car.

Do they touch the car?!
Move your luggage rack or
Screw him even more.

